



AUTUMN

Debutante

SPECKLE PARK SALE

SATURDAY, OCTOBER 23, 2021 AT 5:00 PM
BRANTFORD, ONTARIO

AUTUMN

Debutante

SATURDAY, OCTOBER 23, 2021 | AT THE FARM, BRANTFORD, ONTARIO | SALE STARTS AT 5:00 PM

Alex and I welcome you to our Second Annual Autumn Debutante Speckle Park Sale in Brantford, Ontario. The heart of the east.

We are thrilled to share a collection of some of the best cattle in Canada with you and all the other discerning cattlemen around the globe. With this pandemic so drastically impacting our families and businesses, we are committed to keeping you safe by giving you the choice to join us virtually or in-person.

Once again, our sale offers a treasure of proven genetics.

Speckle Park cattle remain the fastest growing breed in Canada, and continue to enjoy increased popularity in international markets. More and more of our American neighbours are appreciating that Speckle Park cattle are perfect meat machines. Experienced cattlemen can't help but be impressed with this breed's ability to efficiently convert less than ideal pastures into beautiful marbling and succulent flavour.

Our guest consignors have dug deep into their genetic pools to guarantee many options to boost your herd. We thank you for taking the time to evaluate our catalogue, and discover the unique investment potential we have to offer.

We look forward to seeing you Saturday night for a record sale.

Hugh and Paula MacNeil Silvertip Speckle Park

Alex and Florence Steele Steele Speckle Park

FROM THE DESK AT *T Bar C*

The 2021 Autumn Debutante Sale promises to be a highlight event for the Speckle Park breed. The consignors involved have put their best foot forward in offering a selection of cattle to progress the breed into a bright future!

The calendar year heifer calves are very intriguing, with quality and pedigree to burn. Carefully chosen from the top of their respective herds, please study this section heavily as the depth of stock is of serious consideration. The bred females again are selected from the heart of the programs represented with matings to the most popular sires available, that enable you a quick return on investment. Young cows that are proven with all the homework done are also available, with a select few lots of frozen genetics that are rare and from some of the most proven dams and sires in the breed.

We certainly encourage your attendance, as we all know Hugh and Dan are more than capable of holding a fun filled event at the beautiful farm just outside Brantford. Please don't hesitate to contact any of the T Bar staff with questions, or to represent your program with any bids you'd like to place on the offering. Thanks again to all the consignors and especially the crew at Silver Tip for all their work in staging this event at their farm.

See you there !

Ben Wright



CHRIS POLEY
306-220-5006



SHANE MICHELSON
403-363-9973



BEN WRIGHT
519-374-3335

SALE DAY INFORMATION

AUCTIONEER

Chris Poley 306-220-5006

SALE STAFF



Ben Wright 519-374-3335

Shane Michelson 403-363-9973

Chris Poley 306-220-5006

SALE DAY CONTACTS

Ben Wright 519-374-3335

Shane Michelson 403-363-9973

Hugh MacNeil 519-861-2722

Dan Boers 266-934-8458

Alex Steele 519-535-1488

Shawn Weir 519-851-1439

ONLINE BIDDING

DLMS

Mark Shologan 780-699-5082

TRUCKING

H.S. Knill Co. Ltd. 877-442-3106

INSURANCE

Merit Insurance (Glen Smith) 416-526-5428

ACCOMMODATIONS

TownPlace Suites By Marriott

Brantford, ON 519-720-2777

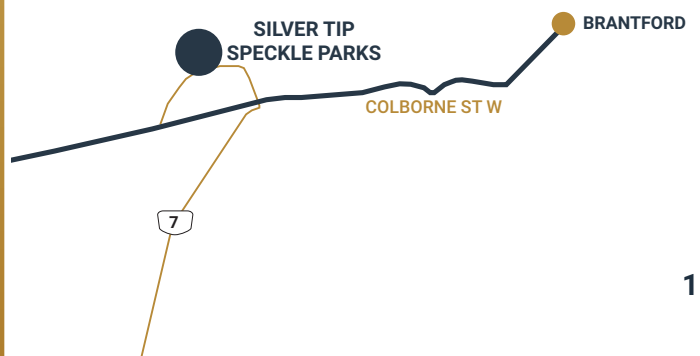
Hampton Inn & Suites By Hilton

Brantford, ON 519-720-0084

DIRECTIONS TO SALE

Silver Tip Speckle Park

299 Oak Hill Drive, Brantford, ON



REFERENCE

Sires



COLGAN'S BAXTER 1B



UNLIMITEDSPOTS GRWND FUTURE 20F



NOTTA 151A CAUSE N EFFECT 309C



AVERY CREEK BANJO 01B



CAJA ZEPPELIN 1B



CODIAK MONUMENT GNK 107D



SILVER TIP FABIO 03F



STEELE FRONT RUNNER 5E



UPTO SPECS ULYSSES 25U



Lot
1

SILVER TIP 22Y *Jr* 14J

FEMALE • {CAN} 12504-PB • STS 14J • FEB 10, 2021 • BW: 81 LBS.

Sire

RIVER HILL 50T CRUSADER 025C
RIVER HILL 025C EMPEROR 355E
RIVER HILL 54Z CINDER 5C

Dam

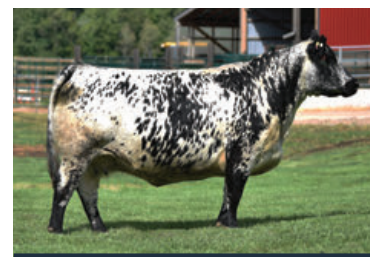
MOOVIN ZPOTZ ZAMBOKA 1Z
SILVER TIP 22Y STS 15C
CALAMASUE 22Y

This calf is one of the top calves produced at our farm this year out of a daughter of 22Y, STS 15C. This heifer is big ribbed with excellent udder development to create the kind of female you will want to build a cow herd around.

**Homo Polled | E^D/E^D | Myostatin Non-Carrier
CONSIGNED BY SILVER TIP SPECKLE PARKS**



RIVER HILL 025C EMPEROR 355E | SIRE



CALAMASUE 22Y | GRAND DAM



Lot
2

SILVER TIP *Special Banjo* 23J

FEMALE • APPLIED FOR • STS 23J • FEB 21, 2021 • BW: 71 LBS.

Sire

ZORRO MATTERS 1Z
AVERY CREEK BANJO 01B
TUMBLEWEED ACRES LULU 18Y

Dam

CODIAK EAGLE GNK 46Y
SILVER TIP 04Y2 STS 35C
SILVER TIP SPECIALYVETTESTS07A

A Jencrest Yvette 4Y grand daughter sired by Avery Creek Banjo 01B. This heifer is not only eye appealing, but is put together to produce production machines. A definite asset to anyones breeding program.

CONSIGNED BY SILVER TIP SPECKLE PARKS

Lot
3a

SILVERTIP *Almost A Monument* 01J

MALE • APPLIED FOR • STS 01J • JAN 1, 2021 • BW: 65 LBS.



Sire

CODIAK OSCAR GNK 8S
CODIAK MONUMENT GNK 107D
CODIAK UNIQUE GNK 8R

Dam

SAGE LAD 3L
ALMOST A RANCH MERCEDES 53N
CODIAK 53L

He is naturally thick, good footed with great testicle development to make for a excellent herd sire.

**CONSIGED BY SILVER TIP
SPECKLE PARKS**

Lot
3

ALMOST A RANCH *Mercedes* 53N

FEMALE • -1643- PT • TCB 53N • APR 2, 2003



Sire

SPOTS'N SPROUTS JASMINE 101J
SAGE LAD 3L
CODIAK FALCON 20F

Dam

ASPEN ACRES JOLT OF THUNDER 3J
CODIAK 53L
WILDWOOD BETSY 9J

Wow, old genetics at its best! Moderate size but plenty of depth top and rib. August weight 1380 lbs. This milk machine consistently raises a great calf all on her own. She is bred back the same way to Codiak Monument 107D, which needs no introduction, for an early January calf

**AI bred to Codiak Monument
107D on March 22 2021.
CONSIGED BY SILVER TIP
SPECKLE PARKS**

Lot
4a

SILVERTIP 61 *Runner* 21J

FEMALE • APPLIED FOR • STS 21J • FEB 20, 2021 • BW: 73 LBS.



Sire UPTO SPECS ULYSSES 25U
STEELE FRONT RUNNER 5E
LEGACY UNITY 51X
Dam RIVER HILL NIGHT HAWK 12N
CALAMASUE 19S
CDS FARMS JODIE 9K

What a feminine heifer who takes right after her sire Steeles Front Runner 5E with natural muscling to raise those meat machine calves. Take one or take both, your choice.
CONSIGED BY SILVER TIP SPECKLE PARKS

Lot
4

Calamasue 19S

FEMALE • {CAN} 2400-PB • HHH 19S • FEB 18, 2006



Sire P.A.R. HEMORRHOID 25H
RIVER HILL NIGHT HAWK 12N
SPOTS 'N SPROUTS 12C
Dam PRAIRIE HILL EDDIE 33G
CDS FARMS JODIE 9K
ASPEN ACRES 7D

She is another of the great old genetic line of CDS Farms. Jodie 9K consistence producing milking females on the bottom with a new twist on the top back to Night Hawk and Little Eddie 19E, great meat machine sires. She sells rebred the same way to Steeles Front Runner 5E, because why ruin a beautiful thing! She also sells on choice with her heifer calf at side.

Exposed to Steeles Front Runner5E on from April 1 to August 1, 2021.
CONSIGED BY SILVER TIP SPECKLE PARKS

Lot
5

SILVER TIP *Godiegirl* 115G

FEMALE • {CAN} 11657-PB • STS 115G • MAR 31, 2019



Sire

UNEEDA YAEL 06Y
SPOTS 'N SPROUTS CARLOS 104C
SPOTS 'N SPROUTS 14Y

Dam

REMIN'S SPECIAL 1L
SILVER TIP Y19 STS 25B
CDS FARMS JODIE 9K

This heifer goes back to CDS Farms Jodie 9K with Remins Special on the top, sired by Spots 'N Sprouts Carlos 104C. A perfect combination for meat, muscle and milk.

Homo Polled | E^D/E^D | Myostatin Non-Carrier

AI bred to Avery Creek Banjo 01B on April 2, 2021.

CONSIGED BY SILVER TIP SPECKLE PARKS

Lot
6

SILVER TIP 8Y *Sts* 111G

FEMALE • {CAN} 9743-PB • STS 111G • MAR 22, 2019



Sire

ZORRO MATTERS 1Z
AVERY CREEK BANJO 01B
TUMBLEWEED ACRES LULU 18Y

Dam

RIVERHILL 64SURBAN COWBOY 3U
SPOTS 'N SPROUTS 8Y
SPOTS 'N SPROUTS 21U

Her dam is Spots 'N Sprouts 8Y, who's dam goes back to HWY4 20K, sired by Riverhill 64S Urban cowboy 3U. A great example of what a Banjo heifer can look like. Lots of top and thickness to make the kind of cows that are keepers. She was held back and bred for a Jan.15th calf to Future 20F.

AI bred to Unlimited Spots GRNWD Future 20F on April 5 2021.

CONSIGED BY SILVER TIP SPECKLE PARKS



Lot
7

PORTERCREST *Fiona* 2F

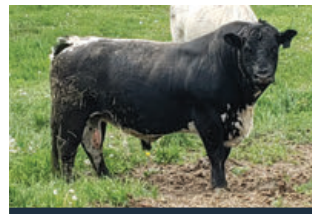
FEMALE • {CAN} 9010-PB • NKP 2F • MAR 28, 2018

Sire

SPOTS 'N SPROUTS EXTREME 104X
SPOT-R-NONE KYAK 6B
SPOTS 'N SPROUTS 5W

Dam

UPTO SPECS ROSCO 8R
UPTO SPECS WILMA 7W
A&W HANNAH 7M



SILVERTIP FABIO 03F | SERVICE SIRE

The picture speaks for itself. Here is a functional female with lots of top and rump, the kind cattleman want. She is out of the famous Upto Specs Willma 7W cow and the Spot-R-None Kayak 6B bull whose heifers averaged over \$10,000.00 a piece in a previous sale. She is bred to Silvertip Fabio 03F, a embryo son of Codiak Eagle on the top and Jencrest Sabrina on the bottom, back to that milk machine Pride of P.A.R.1G. This should be quite a combination of power.

Exposed to Silvertip Fabio 03F from April 15 to August 1 2021. Confirmed safe in calf, due to calve end of February.

CONIGNED BY SILVER TIP SPECKLE PARKS

Lot
8

Calamasue 47U

FEMALE • {CAN} 2927-PB • HHH 47U • MAY 1, 2008



Sire PRAIRIE HILL NEW DEAL 85N
ALMOST A RANCH MUSTANG GT 1R
CODIAK 7L

Dam SAGE LAD 3L
ALMOST A RANCH MERCEDES 53N
CODIAK 53L

We have had a lot of inquiries about flushing this cow, as she again is the old genetics, going back to Prairie Hill Masterplan on the top and again Sage Ladd on the bottom. There is so many possibilities for breeding outcross. She sells safe in calf to Riverhill 025C Emperor 355E, a son of the high selling bull, Crusader 025C. Homo Polled | E^D/E^D | Myostatin Non-Carrier
Exposed to Riverhill 025C Emperor 355E from May 1 to August 1, 2021.
CONSIGNED BY SILVER TIP SPECKLE PARKS

Lot
9

Two PACKAGES OF 6 UNITS OF SEMEN STEELE FRONT RUNNER 5E

MALE • {CAN} 7255-PB • SSP 5E • FEB 19, 2017



Sire RAVEN MEADOWS MAGNUM 10N
UPTO SPECS ULYSSES 25U
PRAIRIE HILL REBA 154F

Dam LEGACY UTMOST 30U
LEGACY UNITY 51X
LEGACY UNITY 45U

This bull is sired by Upto Specs Ulysses 25U by the dam Legacy Unity 51X. We have numerous offspring retained in our herd from this high producing bull. He is full of muscle and a natural meat carrier. Get some semen and try it before it is all gone.
Homo Polled | E^D/E^D | Myostatin Non-Carrier | AA Tenderness Carrier
CONSIGNED BY SILVER TIP SPECKLE PARKS

Lot
10

Pregnant RECIPIENT

RIVER HILL 26T WALKER 60W X AVERY CREEK CHARLOTTE 10C



AVERY CREEK CHARLOTTE 10C | DAM OF PREGNANCY



RIVER HILL 26T WALKER 60W | SIRE OF PREGNANCY

Sire

RIVER HILL TRAFFIC JAM 26T
RIVER HILL 26T WALKER 60W
RIVER HILL SHOW ME OFF 60S

Dam

ZORRO MATTERS 1Z
AVERY CREEK CHARLOTTE 10C
TUMBLEWEED ACRES LULU 18Y

91E Driver sim/angus recipient Confirmed to have a heifer calf end of February . What a powerhouse combo ,Banjos full sister and award-winning Walker who needs no introduction .If you want meat and muscle this is your combo.

Recip was implanted on May 27, 2021.
CONSIGNED BY SILVER TIP SPECKLE PARKS

Lot
11

Pregnant RECIPIENT

NOTTA 151A CAUSE N EFFECT 309C X SILVER TIP ELECTRA 43E



SILVER TIP ELECTRA 43E | DAM OF PREGNANCY



NOTTA CAUSE N EFFECT 309C | SIRE OF PREGNANCY

Sire

NOTTA 101Y BLACK CAP 151A
NOTTA 151A CAUSE N EFFECT 309C
NOTTA 300X THETA 11A

Dam

UPTO SPECS ULYSSES 25U
SILVER TIP ELECTRA 43E
JENCREST UNIQUE 6U

Black sim/Angus second calver recip. Bull calf due early March. What a combo with Electra winning Paris and finishing in the finals at Agribition to CNE winning as well at Agribition .This combination will put you in the show ring to win as her Dam Jencrest 6U puts more in the show ring than any other at Silvertip!

Recip was implanted on June 10, 2021.
CONSIGNED BY SILVER TIP SPECKLE PARKS

Lot
12

Pregnant RECIPIENT

CODIAK MONUMENT GNK 107D X JENCREST UNIQUE 6U



JENCREST UNIQUE 6U | DAM OF PREGNANCY



CODIAK MONUMENT GNK 107D | SIRE OF PREGNANCY

Sire

CODIAK OSCAR GNK 8S
CODIAK MONUMENT GNK 107D
CODIAK UNIQUE GNK 8R

Dam

STAR BANK LACERTA 68L
JENCREST UNIQUE 6U
FAITH OF P.A.R. 4N

Red Angus recip. Couldn't sex keep all the excitement either way. With a calf due in mid February .I cant say enough about this combination other than it works giving you a calf that is full of colour, hip and muscle

Recip was implanted on May 12, 2021.
CONSIGNED BY SILVER TIP SPECKLE PARKS

Lot
13

Package OF THREE EXPORTABLE EMBRYOS

MAUNGAHINA NEON X CALAMASUE 22Y



CALAMASUE 22Y | DAM OF EMBRYOS



MAUNGAHINA NEON | SIRE OF EMBRYOS

Sire

MAUNGAHINA LEGACY
MAUNGAHINA NEON
MAINSTREAM E12

Dam

LEGACY UPPERCUT 74U
CALAMASUE 22Y
MISS SAGE 2N

This combination of one of our top producers and Dereck Hayward of New Zealand outstanding bull with the breed plan data to back it up . What a combo of genetics just coming available to us here in Canada . Be the first to top the show ring and get some outcross genetics. **Gaurantee of one 90 day pregnancy if implanted by a certified technician.**
CONSIGNED BY SILVER TIP SPECKLE PARKS

Lot
14

Package OF THREE EMBRYOS

CAJA ZEPPELIN 1B X SWEET THING OF P.A.R. 021S



FULL SIBLING TO EMBRYOS



CAJA ZEPPELIN 1B | SIRE OF EMBRYOS

Sire

UNEEDA ZAPPER 13Z
CAJA ZEPPELIN 1B
NOTTA 60W PHOTO-FINISH 1Z

Dam

P.A.R. PATHFINDER 1P
SWEET THING OF P.A.R. 021S
SHANIA OF P.A.R. 21P

The proof is on the ground outside in the feature pen. This is what this Powerstroke grand daughter by Pathfinder can do. This is your last chance at this combo as 021S has passed this summer.

Gaurantee of one 90 day pregnancy if implanted by a certified technician. USA qualified.
CONSIGNED BY SILVER TIP SPECKLE PARKS

Lot
15

Package OF THREE EXPORTABLE EMBRYOS

PREMIER 101Y LOGIC L11 X JENCREST UNIQUE 6U



JENCREST UNIQUE 6U | DAM OF EMBRYOS



PREMIER 101Y LOGIC L11 | SIRE OF EMBRYOS

Sire

SIX STAR 82U ROYAL FLESH 101Y
PREMIER 101Y LOGIC L11
SPKNZ H2

Dam

STAR BANK LACERTA 68L
JENCREST UNIQUE 6U
FAITH OF P.A.R. 4N

Winning cow with New Zealand genetics on this up-and-coming powerful thick bull.

Gaurantee of one 90 day pregnancy if implanted by a certified technician.
CONSIGNED BY SILVER TIP SPECKLE PARKS



Lot
16

STEELE *Jasmine* 4J

FEMALE • {CAN} 13045-PB • SSP 4J • FEB 23, 2021 • BW: 72 LBS

Sire

UNDERHILL ALL OUT 1D
STEELE UNIQUE 8G
LEGACY UNITY 51X

Dam

CODIAK PUTNAM GNK 61Y
STEELE CHANDRA 22C
CODIAK KATIE GO ON GNK 7Y

This heifer is an eye catcher in the pen, carrying length, depth and femininity. She comes from a milk maternal line of brood cows.

Homo Polled | E^D/E^D | Myostatin Non-Carrier
CONSIGNED BY STEELE SPECKLE PARK



Lot
17

STEELE *Jessie Pride* 9J

FEMALE • {CAN} 12895-PB • SSP 9J • MAR 8, 2021 • BW: 70 LBS

Sire

CODIAK PUTNAM GNK 61Y
STEELE EXPORTER 10E
UPTO SPECS WANDA 22W

Dam

STEELE KERNAL 3A
STEELE CHARLENE PRIDE 10C
STEELE WINONA PRIDE 1A

Her dam 10C who never disappoints us goes back to Pride of Par. This heifer impresses us with her thickness which she carries evenly from shoulder to rump. A great prospect for the future.

Homo Polled | E^P/E^P | Myostatin Carrier
CONSIGNED BY STEELE SPECKLE PARK

Lot
18a

STEELE *Jilian* 10J

FEMALE • {CAN} 12896-PB • SSP 10J • MAR 9, 20121 • BW: 67 LBS



Sire

UPTO SPECS ULYSSES 25U
STEELE BLACK MAGIC 22F
STEELE CHARLENE PRIDE 10C

Dam

RIVER HILL 60W LINE DRIVE 54Z
STEELE DRAMATIC GLOW 19G
STEELE DRAMATIC 4D

A nice square deep bodied heifer with lots of femininity like her dam. Coming from this cow family she has a lot going for her.

Homo Polled | E^D/E^D | Myostatin

Non-Carrier

CONSIGNED BY STEELE SPECKLE PARK

Lot
18

STEELE *Dramatic Glow* 19G

FEMALE • {CAN} 10058-PB • SSP 19G • APR 18, 2019



Sire

RIVER HILL 26T WALKER 60W
RIVER HILL 60W LINE DRIVE 54Z
NOTTA PHO-FINISH 54P

Dam

RIVER HILL TRAFFIC JAM 26T
STEELE DRAMATIC 4D
STEELE TOPAZ 3Y

A Line Drive from a pedigree loaded with proven brood cows. Glow herself has been a dream 2yr old. She calved on her own, milks well and has a good temperament. Can't believe we are letting her go. She will have a great future.

Homo Polled | E^D/E^D | Myostatin

Non-Carrier

AI bred to Steele Secure 7G on June 24, 2021.

CONSIGNED BY STEELE SPECKLE PARK

Lot
19

STEELE *Faith* 10F

FEMALE • {CAN} 8194-PB • SSP 10F • MAR 10, 2018



Sire

RIVER HILL 50U ALL IN 60A
UNDERHILL ALL OUT 1D
SPOTS 'N SPROUTS 10S

Dam

P.A.R. IMPACT 1E
H.P.L. KIM 6M
SPOTS 'N SPROUTS 4E

Faith is a powerful cow with lots of rib and strength. She is backed by an interesting outcross pedigree on the dam's side.

**AI bred to Unlimited Spots
GRNWD Future 20F on March 21,
2021.**

Homo Polled | E^D/E^D | Myostatin
Non-Carrier

**CONSIGED BY STEELE SPECKLE
PARK**

Lot
20

STEELE *Diana* 7D

FEMALE • {CAN} 6316-PB • SSP 7D • MAR 19, 2016



Sire

A & W 15R
HS UNTAPPED 3A
NOTTA 2R PRETENDER 4T

Dam

ROCKY RIDGE SILVERADO BEN 1S
LEGACY SASSAFRAS 97Y
LEGACY SASSAFRAS 1S

Coming from Untapped and the great Sassafras she is not hard to look at. She has a great udder and milks well. Sassafras is not making anymore offspring so don't miss this one.

**AI bred to Colgan's Baxter 1B on May
18, 2021.**

Homo Polled | E^D/E^D | Myostatin Non-
Carrier

**CONSIGED BY STEELE SPECKLE
PARK**



SASSAFRAS | DAM

Lot
21

MALLETRIVER *Jujube* 2J

FEMALE • {CAN} 12736-PB • MAL 2J • MAR 4, 2021 • BW: 75 LBS



Sire WRANGLER MR PERFECT 8D
COLESDALE GULFSTREAM 6G
RIVER HILL 60A DA-CHANCE 05D

Dam COLGAN'S EXCALIBUR 23E
COLESDALE CAMELOT 1G
COLGAN'S ELETA 41E

Don't miss out on this eye candy! Jujube has lots of potential with Putnam on the maternal side and Mr Perfect on the paternal. She is out of a first calf heifer that we bought at this sale last year who has done an amazing job raising this calf. Jujube's dam is well uddered and has lots of milk.

Homo Polled | E^p/e | Myostatin Non-Carrier

**CONSIGED BY MALLET RIVER
SPECKLE PARK**



CAMELOT | DAM

Lot
22

TRESTLE CREEK *Joplin* 5J

FEMALE • {CAN} 12781-PB • TCC 5J • MAR 8, 2021 • BW: 74 LBS



Sire CAJA ZEPPELIN 1B
TRESTLE CREEK GROOT 15G
UPTO SPECS WANDA 22W

Dam STEELE MORGAN 20E
STEELE GISELLE 5G
STEELE ESTELLE 8E

Trestle Creek Joplin is a later born heifer that has grown to be a nice deep and well framed little calf. Her mother was a heifer that had great instincts from the beginning. She has raised a strong calf with lots of milk to spare.

Homo Polled | E^p/E^p | Myostatin Non-Carrier

**CONSIGED BY TRESTLE CREEK
CATTLE CO**



Lot
23

RED MAPLE *Unmarked Jazzy* 1J

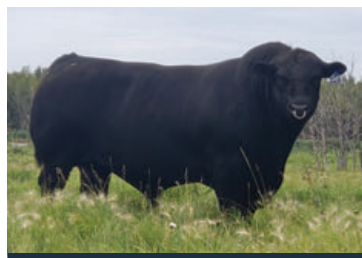
FEMALE • {CAN} 12858-PB • EJC 1J • FEB 2, 2021 • BW: 63 LBS

Sire

HS UNTAPPED 3A
JSF UNMARKED 2D
JENCREST YAVONNA 6Y

Dam

RAVENWORTH ICONIC 115E
RED MAPLE 115E BEYONCE 1G
RED MAPLE 22Z BEAUTY 2E



JSF UNMARKED 2D | SIRE

1J was one of Ben's top picks of our 2021 calf crop. She is a very stylish heifer with an abundance of width and thickness from her rump to her front end. She stands and walks very correctly on her feet and legs. Her mother is a first time calver that has lots of milk from a great udder. Her dam, grand dam and great grand dam are still in production and have great udders. This heifer has a tremendous sire stack in her pedigree. Sired by JSF Unmarked 2D with crosses to Ravenworth Invictus 103C, Codiak Hear The Ghost 22Z and Spots And Sprouts Zinger 112Z. 1J combines both type and pedigree and offers great breeding potential to any breeding program

Homo Polled | E⁰/E⁰ | Myostatin Carrier

CONSIGNED BY RED MAPLE SPECKLE PARK



Lot
24

DKM *Jean* 2J

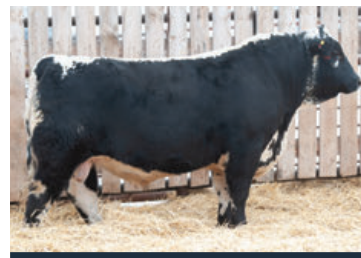
FEMALE • {CAN} 12725-PB • DKM 2J • MAR 6, 2021 • BW: 80 LBS

Sire

CODIAK OSCAR GNK 8S
CODIAK END TO END GNK 802E
CODIAK GNK 53W

Dam

UPTO SPECS ROSCO 8R
UPTO SPECS WILMA 7W
A&W HANNAH 7M



CODIAK END TO END GNK 802E | SIRE

This strikingly marked End to End heifer is out of a great milking cow, Upto Specs Wilma 7W, a proven cow with great longevity and at the age of 13 still producing show class cattle. Follow the cow lines and she goes back to Prairie Hill Reba 54F who was a fantastic milker and established foundation stock herds the world over. DKM Jean is a long framed, dark sided Speckle Park heifer with a build as solid as her heritage and stunning looks to add to your front pasture.

Homo Polled | E^D/E^D | Myostatin Non-carrier
CONSIGNED BY SKYE LINE FARMS



Lot
25

SKYE LINE *Dalwhinnie* 3J

FEMALE • {CAN} 12882-PB • SKY 3J • FEB 17, 2021 • BW: 84 LBS

Sire

P.A.R. X-LOG 21X
FLYING E ABNER 4A
LEGACY RENA 100R

Dam

RIVER HILL 26T WALKER 60W
CALICO CREEK DISANI 7D
PETULA OF P.A.R. 61P



FLYING E ABNER 4A | SIRE

A truly feminine, clean fronted heifer calf as fine as the whisky she is named after. Dalwhinnie authenticates the meaning of her name as a 'gentle spirit'. Sired by the acclaimed Flying E Abner 4A and a grand daughter of the prolific Petula of Par 61P who retired to pasture this summer after producing well over 27 offspring. Carrying a depth of rib as deep as the lochs of the Scottish Highlands themselves, she is well-footed, show ready and halter trained. Here's to a uniquely clean and smooth heifer calf.

CONSIGNED BY SKYE LINE FARMS

Lot
26

WATSON *Leopard Lindsay* 15J

FEMALE • {CAN} 8442-PB • PEW 15J • FEB 10, 2021 • BW: 86 LBS



Sire

LEGACY BONE CRUSHER 35B
WATSON CRUSHER LEOPARD 10E
PETEMAR RIDE LILLY 5A

Dam

HS UNTAPPED 3A
WATSON UNTAPPED LARK 2E
CODIAK LYNX 33L

Lindsay 15J is a moderate stout made female with good feet. She is sired by the same bull as the 2021 Grand and Reserve Champion Females at Paris Fair. Her Dam is moderate framed, good uddered and raises one of the best calves every year. Dam is a maternal sister to Watson Last Ride 4F.

CONSIGED BY WATSON LAND & LIVESTOCK INC.

Lot
27

WATSON *Crusher Mercedes* 21F

FEMALE • {CAN} 8442-PB • PEW 21F • MAR 2, 2018



Sire

LEGACY UNLEASHED 73U
LEGACY BONE CRUSHER 35B
LEGACY JINGLE 89X

Dam

SAGE LAD 3L
ALMOST A RANCH MERCEDES 53N
CODIAK 53L

Mercedes 21F is a long, wide-topped, good uddered young cow. Sired by Crusher, this female is structurally correct, and has the potential to produce a great one! She is bred back to Prairie Hill 76B Double Up 5F.

Pasture Exposed to Prairie Hill 76B Double Up 5F from May 22 to August 1, 2021. Confirmed 35 days pregnant on August 3, 2021. CONSIGED BY WATSON LAND & LIVESTOCK INC.

Lot
28a

EDGEWATER *Joosie* 4J

FEMALE • APPLIED FOR • JJC 4J • MAR 5, 2021



Sire

UPTO SPECS ULYSSES 25U
JENCREST BUDDY 7B
JENCREST YALENA 8Y

Dam

SPOTS 'N SPROUTS EXTREME 104X
SPOT-R-NONE SASS-N-SHIMMER 5D
SPOTS 'N SPROUTS 4X

Joosie is the very first heifer calf off of 5D and is her best calf to date! A young March heifer calf, she has the pieces to make an outstanding show heifer and an even better cow. Proven pedigree with Raven Meadows Magnum 10N showing up 3 times on her sire's side! As well, her dam's half sisters have both been shown successfully in 2017 and 2018! **Homo Polled | E^D/E^D | Myostatin Non-carrier**
CONSIGNED BY EDGEWATER FARMS

Lot
28

SPOT-R-NONE *Sass-N-Shimmer* 5D

FEMALE • {CAN} 6483-PB • GPS 5D • MAR 24, 2016



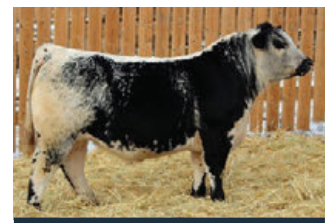
Sire

STYALS LIGHTNING LADD 14P
SPOTS 'N SPROUTS EXTREME 104X
SPOTS 'N SPROUTS 3R

Dam

RIVER HILL SKIPPER 6S
SPOTS 'N SPROUTS 4X
SPOTS 'N SPROUTS 4S

5D has done a great job for us and we are probably crazy to be selling her at this stage. She is just coming into her prime now and the longevity in this female's structure and pedigree is outstanding, great feet and legs with a huge barrel shaped middle. Her early service to Greenwood Headliner is a no miss mating and a calf we are so excited to see on the ground for her new owner! **AI bred to Greenwood Headliner 71H on March 27, 2021. Preg checked safe on May 12.**
CONSIGNED BY EDGEWATER FARMS



HEADLINER | SERVICE SIRE

Lot
29

FLEETWOOD *Fitterbug* 04J

FEMALE • APPLIED FOR • FSP 04J • JAN 23, 2021 • BW: 58 LBS



Sire

WARATAH JUST CHILLIN J154
BLACK DIAMOND MARCHO MAN
SIX STAR SPC 68L KARA E220

Dam

REMIN'S SPECIAL 1L
FLEETWOOD DESIRÉE 01D
JENCREST UNIQUE 6U

This sweet, moderately framed heifer is the complete package. Hailing from the CWA 2017 Junior Champion Female, Fleetwood Desiree and paired with Australia's 2018 Adelaide Feature Show Supreme Exhibit, Black Diamond Marcho Man, she is destined for greatness. If you miss out on this lot, be sure to see the embryo lot bred the same way!

**CONSIGED BY FLEETWOOD
SPECKLE PARK**

Lot
30

FLEETWOOD *Jazzy* 07F

FEMALE • APPLIED FOR • FSP 07J • FEB 2, 2021 • BW: 70 LBS



Sire

RIVER HILL 26T YAGER 99Y
CODIAK GEAZA GNK 105D
CODIAK UNIQUE GNK 8R

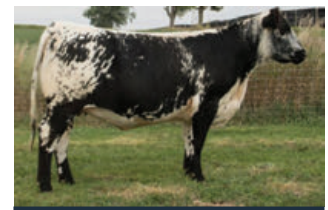
Dam

STAR BANK LACERTA 68L
SILVER TIP FUNKEY STUFF 131F
CALAMASUE 22Y

This heifer is hard to let go, but she's too good not to share! She's an eye-catcher in the pen with her deep body and feminine front end. Her Dam is a first calver and has done a tremendous job raising her. We are certain she will develop into a phenomenal cow and will go on to produce high quality offspring. Breed her to a white bull and get a beautifully coloured calf!

Homo Polled | E⁰/E⁰ | Myostatin Non-carrier

**CONSIGED BY FLEETWOOD
SPECKLE PARK**



FUNKEY STUFF | DAM

Lot
31

One PACKAGE OF THREE EMBRYOS

BLACK DIAMOND MARCHO MAN X FLEETWOOD DESIRÉE 01D



Sire

WARATAH JUST CHILLIN J154
BLACK DIAMOND MARCHO MAN
SIX STAR SPC 68L KARA E220

Dam

REMIN'S SPECIAL 1L
FLEETWOOD DESIRÉE 01D
JENCREST UNIQUE 6U

What an outcross opportunity this is! Hailing from the CWA 2017 Junior Champion Female, Fleetwood Desiree and paired with Australia's 2018 Adelaide Feature Show Supreme Exhibit, Black Diamond Marcho Man, these embryos will make for some great calves.

Guarantee one pregnancy if implanted by a certified embryo technician. Shipping the cost of the purchaser. Stored at Kirkton Vet Clinic in Kirkton, ON. CAN, USA, and EU qualified.

CONSIGNEE BY FLEETWOOD SPECKLE PARK



MARCHO MAN | SIRE





Lot
32

ANDCHRIS *Hesper* 39H

FEMALE • {CAN} 12666-PB • ACM 39H • APR 8, 2020

Sire

LEGACY PURE WILL 4C
LEGACY PURE COUNTRY 174E
LEGACY WILDBERRY 116W

Dam

MZ YOGI OF COLD CREEK 17Y
MOOVIN ZPOTZ ARGENTINA 15A
MOOVIN ZPOTZ FERRARI 27X

Take a close look at this outstanding heifer. She is the first Legacy Pure Country 174E heifer to be offered for sale. Her outcross dam has a beautiful udder and produces great offspring for us year after year. An outcross on both sides she will work well in any program.

Homo Polled | E^D/E^D | Myostatin Non-carrier

AI bred to River Hill 5C Farr-Out 827F on July 5, 2021.

CONSIGNED BY ANDCHRIS FARMS



Lot
33

ANDCHRIS *Hadley* 6H

FEMALE • {CAN} 12377-PB • ACM 6H • FEB 8, 2020

Sire

CODIAK KOOL CHARLIE GNK 76B
PRAIRIE HILL CUSTOM MADE 46E
RAINA OF P.A.R. 46B

Dam

SPOTS 'N SPROUTS ZINGER 112Z
COULEE SPRINGS RANCH C3P0 5C
SPOTS 'N SPROUTS 3P

C3P0 5C continues to produce the good ones. 6H is a half-sister to Andchris Hope 1H the high selling female in the sale last year. Her sire Custom Made 46E came from the well-known Prairie Hill Ranch. Bred to Andchris Hero 10H, a Ulysses son.

Homo Polled | E^D/E^D | Myostatin Non-carrier
Exposed to Andchris Hero 10H from May 18 to August 8, 2021. Observed bred on May 29, 2021.
CONSIGNED BY ANDCHRIS FARMS

Lot
34

ANDCHRIS *Hatty* 14H

FEMALE • {CAN} 11461-PB • ACM 14H • FEB 19, 2020



Sire

WRANGLER MR PERFECT 8D
UNDERHILL WILD BILL 13F
RIVER HILL 46Y CHER-UNIQUE 6C

Dam

RIVER HILL 26T YAGER 99Y
RIVER HILL 99Y BELLE 65B
RIVER HILL 99W YSABEL 65Y

Unfortunately this is the last progeny from River Hill Belle 65B one of our favourite brood cows who had excellent maternal traits, a beautiful udder and great feet and legs. If she follows in her mother's footsteps you will not be disappointed.

Homo Polled | E^P/E^D | Myostatin
Non-carrier

AI bred to River Hill Far Out 827F
on May 21, 2021.

CONSIGNED BY ANDCHRIS FARMS

Lot
35

ANDCHRIS *Jade* 5J

FEMALE • {CAN} 12782-PB • ACM 5J • JAN 13, 2020 • BW: 78 LBS.



Sire

CODIAK TYCOON CAT GNK 12Z
COLGAN'S DEXTER D'ANGELO 01D
SPOTS 'N SPROUTS 10Y

Dam

LEGACY TURNPIKE CRUISER 27T
D.L.R. ZIPPERY 42Z
D.L.R. JAZLYN 14U

A great mama cow the dam of this calf never fails to impress us. She has been in our flush program producing progeny in both Canada and Australia with great results. We are excited to see how our E.T. calves from Colgan's Dexter D'Angelo 1D develop as we are extremely happy with his offspring to date.

Homo Polled | E^P/E^D | Myostatin
Non-carrier

CONSIGNED BY ANDCHRIS FARMS

Lot
36

COLESDALE *Jolene* 3J

FEMALE • APPLIED FOR • CLSD 3J • JAN 19, 2021 • BW: 72 LBS.



Sire

CODIAK JACK HOBBS GNK 78B
RED MAPLE 78B EASY RIDER 24E
JSF ESSENCE 1B

Dam

CODIAK TYCOON CAT GNK 12Z
COLGAN'S ELETA 41E
CODIAK LIGHTS OUT LISA GNK 28Y

Maternal sister to Colesdale Camelot 1G, another daughter of Colgan's Eleta 41E. Expect great milk volumes from this heifer. Really well built heifer with great potential. Sired by Red Maple 78B Easy Rider 24E, registration pending.

CONSIGNED BY COLESDALE FARMS

Lot
37

COLESDALE *Juliet* 8J

FEMALE • APPLIED FOR • CLSD 8J • FEB 1, 2021 • BW: 78 LBS.



Sire

CODIAK JACK HOBBS GNK 78B
RED MAPLE 78B EASY RIDER 24E
JSF ESSENCE 1B

Dam

SPOT-R-NONE KYAK 6B
UNDERHILL SLICK 17D
D.L.R. LACY 10R

Dam is Underhill Slick 17D, a milking machine, expect great things from this heifer. Solid, well built heifer with excellent potential. Sired by Red Maple 78B Easy Rider 24E, registration pending.

CONSIGNED BY COLESDALE FARMS

Lot
38

RAISE THE BAR *Pinot* 5G

FEMALE • {CAN} 11680-PB • BAR 5G • NOV 17, 2019



Sire

HS UNTAPPED 3A
JSF UNMARKED 2D
JENCREST YAVONNA 6Y

Dam

HEARTRIDGE ARIES 01W
PONDEROSA BELLA 01B
CODIAK KELLE GNK 2X

This November born heifer has it all, thick but feminine! She comes from a line of tremendous milking cows and is a JSF Unmarked daughter, performance and longevity on both sides. She is pasture bred to a Carbon Copy Son for a February calf.

Exposed to Raise The Bar Pandemic 5H from May 16 to July 22, 2021. Preg checked safe in calf, due to calve in February. CONSIGNED BY RAISE THE BAR FARMS

Lot
39

RAISE THE BAR *Jager* 2J

FEMALE • {CAN} 12410-PB • BAR 2J • JAN 22, 2021 • BW: 70 LBS



Sire

CODIAK JACK HOBBS GNK 78B
RED MAPLE 78B EASY RIDER 24E
JSF ESSENCE 1B

Dam

UNDERHILL APACHE CODE 4C
RAISE THE BAR TIMBIT 4E
HEARTRIDGE LITTLE TIFFANY 01B

This well-balanced heifer comes from a line of thick and well put together cows! She is a mid birth weight heifer that has been packing on the pounds on pasture this summer! She will add some size and different genetics to any herd!
CONSIGNED BY RAISE THE BAR FARMS

Lot
40

WALKERBRAE *Erica* 58G

FEMALE • {CAN} 10804-PB • WBF 58G • JUNE 20, 2019



Sire

CODIAK PUTNAM GNK 61Y
WALKERBRAE STINGRAY 10E
CALAMASUE 31C

Dam

CODIAK JACK ATTACK GNK 175A
PONDEROSA ERICA 19E
PONDEROSA ZABABE 17Z

This is a well-muscled and deep bodied heifer.

Hetero Polled | E^D/E^D | Myostatin Carrier

AI bred to Walkerbrae WB Yukon 101H on March 19, 2021.

CONSIGNED BY WALKERBRAE FARMS

Lot
41

WALKERBRAE SE *Taylor* 102H

FEMALE • {CAN} 10836-PB • WBF 102H • JAN 15, 2020



Sire

REMIN'S SPECIAL 1L
PETEMAR SPECIAL EDITION 2D
MISS SAGE 2N

Dam

LEGACY BRUTE FORCE 61Y
LEGACY TAILLIGHT 99E
LEGACY TAILLIGHT 94T

This heifer has the right bloodlines and the type to go with it.

Homo Polled | E^D/e | Myostatin Non-Carrier

AI bred to Walkerbrae WB Yukon 101H on March 20, 2021.

CONSIGNED BY WALKERBRAE FARMS

Lot
42

W.A.R. *Highlight* 66H

FEMALE • {CAN} 11176-PB • WAR 66H • FEB 13, 2020



Sire

MOOVIN ZPOTZ CAMARO 6X
COLGAN'S BAXTER 1B
MOOVIN ZPOTZ ROXY AMBER 4R

Dam

CODIAK OH MY GOSH GNK 60A
RIVER HILL EXTRA-UNIQUE 66E
RIVER HILL 20Y BEA-UNIQUE 66B

Highlight's combo of body depth and femininity is what we like to see in our females. She has an amazing flow from her shoulder down through her rib, combined with a balanced hip giving her style. **Homo Polled | E^D/E^D | Myostatin Non-Carrier**
AI bred to Notta 151A Cause N Effect 309C on May 15, 2021.
Exposed to Greenwood Hank 25H from May 24 to August 25, 2021.
CONSIGNED BY W.A.R GENETICS

Lot
43

W.A.R. *Jasmine* 4J

FEMALE • APPLIED FOR • WAR 4J • JAN 27, 2021 • BW: 102 LBS



Sire

CLEAR VIEW TY 205R
CODIAK OH MY GOSH GNK 60A
CODIAK UNIQUE GNK 8R

Dam

RIVER HILL TRAFFIC JAM 26T
PURA VIDA ZITA 29Z
STYALS PASSION STAR 15P

Jasmine has excelled in our program. She combines the potential to gain pounds but still be an amazing female prospect. If you like them thick and awesome she should be on your list to check out!
CONSIGNED BY W.A.R GENETICS

Notes



CONSIGNOR *Information*

ANDCHRIS FARMS

Andrew and Christine Metcalfe
662702 Rd 66 RR 3
Ingersoll, ON N5C 3J6
519-521-8761
andchrisfarms@hotmail.com

LOT 32-35

SKYE LINE FARMS

J Wainwright and D Smith
556389 Mulmur-Melancthon Twnln
Mulmur, ON L9V 0A4
705-440-3407
jules.fabios@gmail.com

LOT 24-25

COLESDALE FARMS

Bob and Lindsey Coles
077701 11th Line
Meaford, ON N4L 1W5
519-379-7811
colesdalefarms@gmail.com

LOT 36-37

SILVER TIP SPECKLE PARK

Hugh and Paula MacNeil
Box 215
Brantford, ON N3T 5M8
519-861-2722
hugh.macneil@outlook.com

LOT 1-15

EDGEWATER FARMS

John and Kim Corner
4 Middleport Rd
Caledonia, ON
519-771-9536
johncorner1973@gmail.com

LOT 28-28A

STEELE SPECKLE PARK

Alex and Florence Steele
195692 19th Line RR 2
Thamesford, ON N0M 2M0
519-535-1488
alexflo@execulink.com

LOT 16-20

FLEETWOOD SPECKLE PARK

Dave McKillop and Cassie Taylor
31176 Silverclay Line RR 3
Iona Station, ON N0L 1P0
519-319-8483
fleetwoodspecklepark@gmail.com

LOT 29-31

TRESTLE CREEK CATTLE CO.

Jeremy and Rebecca Damen
3846 Rd 134
Stratford, ON N5A 6S4
519-301-2476
trestlecreekcattle@gmail.com

LOT 22

MALLET RIVER SPECKLE PARK

Tim and Christina Benjamins
8410 Concession 8
Moorefield, ON N0G 2K0
519-502-5462
tcbenj@gmail.com

LOT 21

WALKERBRAE FARMS

Scott Walker
5524 Wellington Rd 86
Guelph, ON N1H 6J4
519-994-3256
walkerbraefarms@hotmail.com

LOT 40-41

RAISE THE BAR FARMS

Bruce and Megan Rogers
138052 Grey Rd 112
Meaford, ON N4L 1W5
519-993-2877
raisethebarfarms@hotmail.com

LOT 38-39

W.A.R. GENETICS

Jennifer Wilkins and Kevin Rioux
690 RTE 116
Danville, QC J0A 1A0
819-574-8079
j.wilkins02@hotmail.com

LOT 42-43

RED MAPLE SPECKLE PARK

Elgin and Joan Craig
7595 Wellington Rd 109
Arthur, ON N0G 1A0
519-831-3519
craigcrest@xplornet.com

LOT 23

WATSON LAND & CATTLE

Peter Watson
1183 Sager Road Rr 2
Branchton, ON N0B 1L0
519-242-0933
petemar16@gmail.com

LOT 26-27

TERMS AND *Conditions*

TERMS: The terms of the sale are cash or cheque, payable at par at the sale location. The right of property shall not pass until after settlement has been made; no invoicing on buyers in attendance unless previous arrangements have been made. Every animal sells to the highest bidder and in cases of disputes, the auctioneer's decision will be final. Announcements from the auction block will take precedence over the printed matter in the catalogue. Current exchange rates will be announced sale day. All monies are in Canadian funds.

CERTIFICATE OF REGISTRATIONS: A certificate of registry duly transferred will be furnished to the buyer for each animal after payment has been made.

HEALTH: All animals in the sale have met all necessary health requirements.

PREGNANCY INFORMATION: All serviceable age females have been pregnancy examined by an accredited veterinarian, giving an estimated length of gestation. This estimated gestation period shall be used only as a guideline to calving and is not a guarantee of actual service.

LIABILITIES: All persons attend the sale at their own risk. The seller, facility owner and sale manager assume no liability legal or otherwise, for any accidents that occur. It is understood that T Bar C Cattle Co. (2013) Ltd. is acting only as a medium between buyer and seller and is not responsible for any failure on the part of either party to live up to his obligations. Neither does T Bar C Cattle Co. (2013) Ltd. assume any financial obligations to collect or enforce collection of any monies between parties and any legal action that may in exceptional cases be taken must be between the buyer and the seller. T Bar C Cattle Co. (2013) Ltd. assumes no responsibility for any credit extended by the seller to the buyer. The buyer must look to the seller for fulfillment of all guarantees and representations made hereunder.

DELIVERY: Assistance will be given in getting your purchases home. Each animal becomes the risk of the purchaser as soon as sold.

PHONE, MAIL, WIRE BIDS: Bidders unable to attend the sale may phone, wire or mail their bids and instructions to the sale manager, auctioneer or special representatives. Bids must be received in sufficient time prior to the sale.

INSURANCE: We strongly recommend that insurance is purchased for full value.

ERRORS: All announcements at sale time, written or oral, supersede any written material in the catalogue.

Return Undeliverable
Canadian Addresses To:
T Bar C Cattle Co. Ltd.
Box 2330
Warman, SK S0K 4S0



AUTUMN

Debutante

SATURDAY, OCTOBER 23, 2021 | AT THE FARM, BRANTFORD, ONTARIO | SALE STARTS AT 5:00 PM

CREATED BY:

